

1837 Scherer Parkway
St. Charles, MO 63303

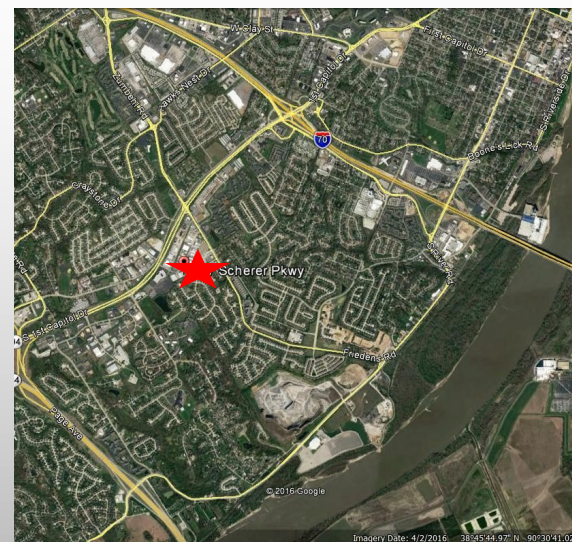
FOR LEASE



OFFICE / WAREHOUSE SPACE

- 3,250 s/f office/warehouse space
- (4) Private offices
- Large conference room
- Professional glass storefront
- HVAC throughout
- Drive in loading
- Some outdoor (secured) storage
- Easy/quick access to Highway 70 & Highway 364
- Minutes to St. Louis County

PRICE REDUCED!!! \$2,250 Per Month (Gross)



Leahy Properties, LLC
Sammye Leahy
314.333.1614
sleahy@leahypropertiesllc.com
www.leahypropertiesllc.com